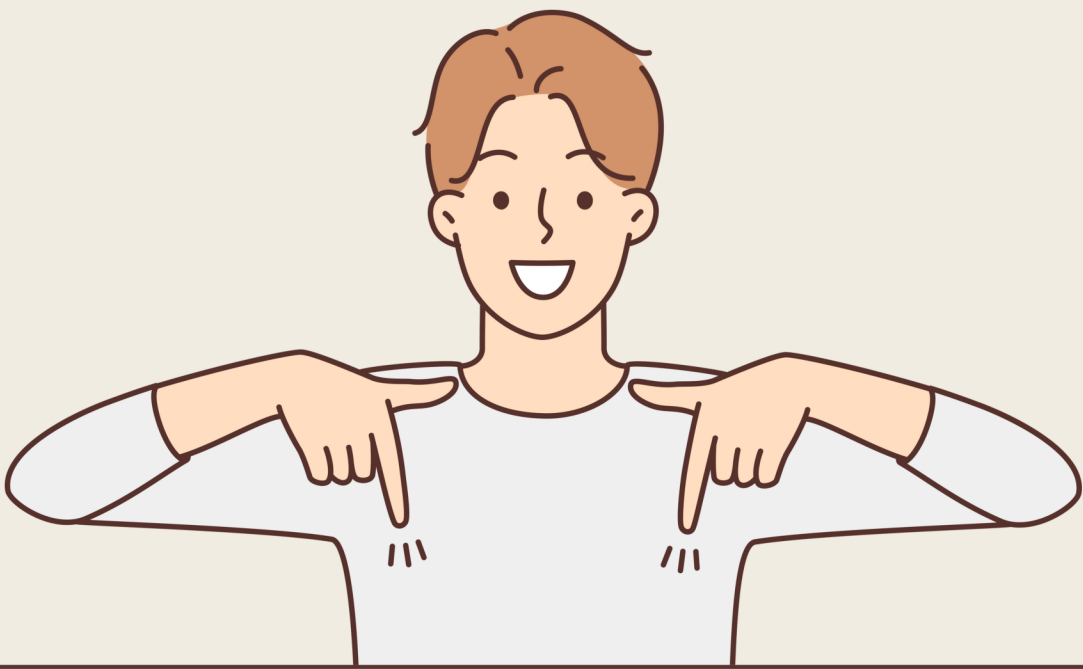


Place of Articulation

ENGLISH CONSONANTS FULL GUIDE

Place of articulation refers to where the obstruction is made to the airflow when the sound is produced. Some consonants in English have a secondary articulation.



BILABIAL

p

b

m

These consonants are produced by articulating the **upper** and **lower lip**, which are in complete contact. Dental caries may impact one's ability to articulate these letters correctly..

LABIO-DENTAL

f

v

The **lower lip** is curled back and raised to slightly touch the **upper teeth**.

DENTAL

θ

ð

They are produced with the **tip of the tongue** softly touching the **upper teeth**.

ALVEOLAR

t

d

s

z

n

l

To produce these consonants, the **tip of the tongue** makes contact with the **alveolar ridge**.

POST-ALVEOLAR

ʃ

ʒ

tʃ

dʒ

These sounds are articulated with the **tongue** near or touching the **back of the alveolar ridge**. The production of the two affricates involves the tip of the tongue touching the alveolar ridge, but then separating progressively.

Voiceless

Voiced